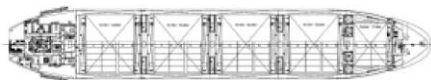




H Class



Ship Basic Information

Builders	Imabari Dockyard, japan
Type	Double hulled Bulk Carrier
Flag	Cyprus
Port of registry	Limassol
Classification	CalssNK NS / MNS (BCM, BC-XII, GRAB, PSPC-WBT)(IWS)(IHM) Strengthened for heavy cargo loading where holds 2&4 may empty / Double hull construction applied to all cargo holds

Vessel Specific Information

	IMO No.	Year of Built	Summer Deadweight (mt)	Lightweight (mt)
UBC HALIFAX	9642162	2013	38,090	8,214

Dimension and Main Data

Length o. a.	179,97 m
Length b.p.	173,00 m
Breadth max.	29,80 m
Depth to maindeck	15,00 m
Deadweight summer	38,090 mt
Deadweight winter	37,027 mt
Deadweight tropical	39,155 mt
Deadweight freshwater	39,090 mt
Draft Summer	10,54 m
Draft Winter	10,32 m
Draft Tropical	10,76 m
Draft Tropical Freshwater	10,99 m
Scantling draft	10,55 m
Speed	about 13.00 kn (Bf 4)
ST.LAWRENCE	NO
BOWTHRUSTER	NO
CEMENT HOLE FITTED	NO
GT	23,273
NT	12,139
Crew Complement	25

Tank Capacity (including day and settling tanks)

VLSFO	1,320 cbm (at 85 %)
ULSGO	392,00 cbm (at 85 %)
Freshwater	294 cbm (at 100%)
Ballast tanks	15,124 cbm (at 100%)
Hatch covers	MacGregor hydraulic End-folding
Number of holds, Hatches	5 holds, 5 hatches (nos. 2+3+4 box shaped)
Hold dimensions(L x B x H)	No. 1: 27.40 m x 7.70 m(fwd) x 22.60 m(aft)
	No. 2: 27.40 m x 25.80 m
	No. 3: 27.40 m x 25.80 m
	No. 4: 27.40 m x 28.80 m
	No. 5: 28.40 m x 9.20 m(fwd) x 25.80 m(aft)
Hatch dimensions	No. 1: 15.86 m x 17.16 m
	No. 2: 20.04 m x 20.02 m
	No. 3: 20.04 m x 20.02 m
	No. 4: 20.04 m x 20.02 m
	No. 5: 20.04 m x 20.02 m

All holds CO2 detector fitted

	Capacity (cbf)	Grain	Bale
No. 1		272,187	260,626
No. 2		350,774	338,164

No. 3	351,978	338,265
No. 4	351,566	338,244
No. 5	337,735	326,908
Total	1,664,242	1,602,210
Gear		
Crane 1 (Hold 1 & 2):	SWL 30.5 mt x 26 m at 9.10 m outreach	
Crane 2 (Hold 2 & 3):	SWL 30.5 mt x 24 m at 9.10 m outreach	
Crane 3 (Hold 3 & 4):	SWL 30.5 mt x 24 m at 9.10 m outreach	
Crane 4 (Hold 4 & 5):	SWL 30.5 mt x 24 m at 11.14 m outreach	
The vessel has 4 hydraulic cranes which are equipped with motor grabs capacity: 3 x 12 m ³		
Machinery		Main engine
Type	Mitsui MAN B&W 6S46MC-C M7	
Power	7,860 kw / 129 rpm (max output) // 6,680 kw / 122 rpm (normal output 85% MCR)	
Grade fuel used:	MDO for STARTING/STOPPING/MANOUVERING	
		Auxiliary engine
Type	Yanmar 6 EY18(A)L	
Number	3	
Power	550 KW / 900 RPM	
Grade fuel used	VLSFO/ULSGO burning	
Generator	555 kva 450 V, 60 Hz, 1 Emergency Generator STAMFORD / UMC 224F1 , 65 kva , 450V , 60 Hz , 83.4 AMPS , S.N: A12H338069	
Fuel consumption at a speed of about 13.0 kn (Bf 4)		
Ship at sea:	about 23.0 mt IFO + about 0.1 mt LSMGO	
Ship in port:	about 2.6mt IFO + about 0.1 mt LSMGO (idle) about 4.5 mt IFO + about 0.1 mt LSMGO (all cranes working)	
Boiler fuel consumption	about 0.7mt IFO in port	
Navigation and communication equipment		
- 2 ARPA radars JRC JMA-9132	- EPIRB MCMURDO SMARTFINDER E8	
- 2 ECDIS JRC JAN 901B	- 2 SART JOTRON TRONSART 20	
- Gyro compass TOKYO KEIKI TG8000	- Weather fax JRC JAX-9B	
- Autopilot TOKYO KEIKI PR6212A-E1-SS2	- Speed log YOKOGAWA DENSHIKIKI EML 500 HV1	
- 2 VHF radiotelephones JRC JLR-770S	- Echo Sounder with digital display JRC JFE-680	
- 3 portable VHF JRC JHS-7	- Inmarsat C JRC JUE-87C	
- MF/HF transmitter/receiver JRC JSS-2250	- SATCOM FBB 500 JRC JUE-501	
- 2 DGPS Receiver JRC JLR-7800	- SATCOM VSAT SAILOR 7016C	
- NAVTEX Receiver JRC NCR 333	- SATCOM STARLINK	
- AIS JRC NCM-983	- VDR JRC JCY-1800	
All details to be considered as about, given in good faith but without any guarantee.		

Email: mail@intership-navigation.com

Phone: +357 25 584000

Fax: +357 25 585756